

fastra.

...SPECIALIST FOR PIPELINE SYSTEM SERVICE

STOPPLING DEVICE STOPL-S-F1



STOPL-S-F1

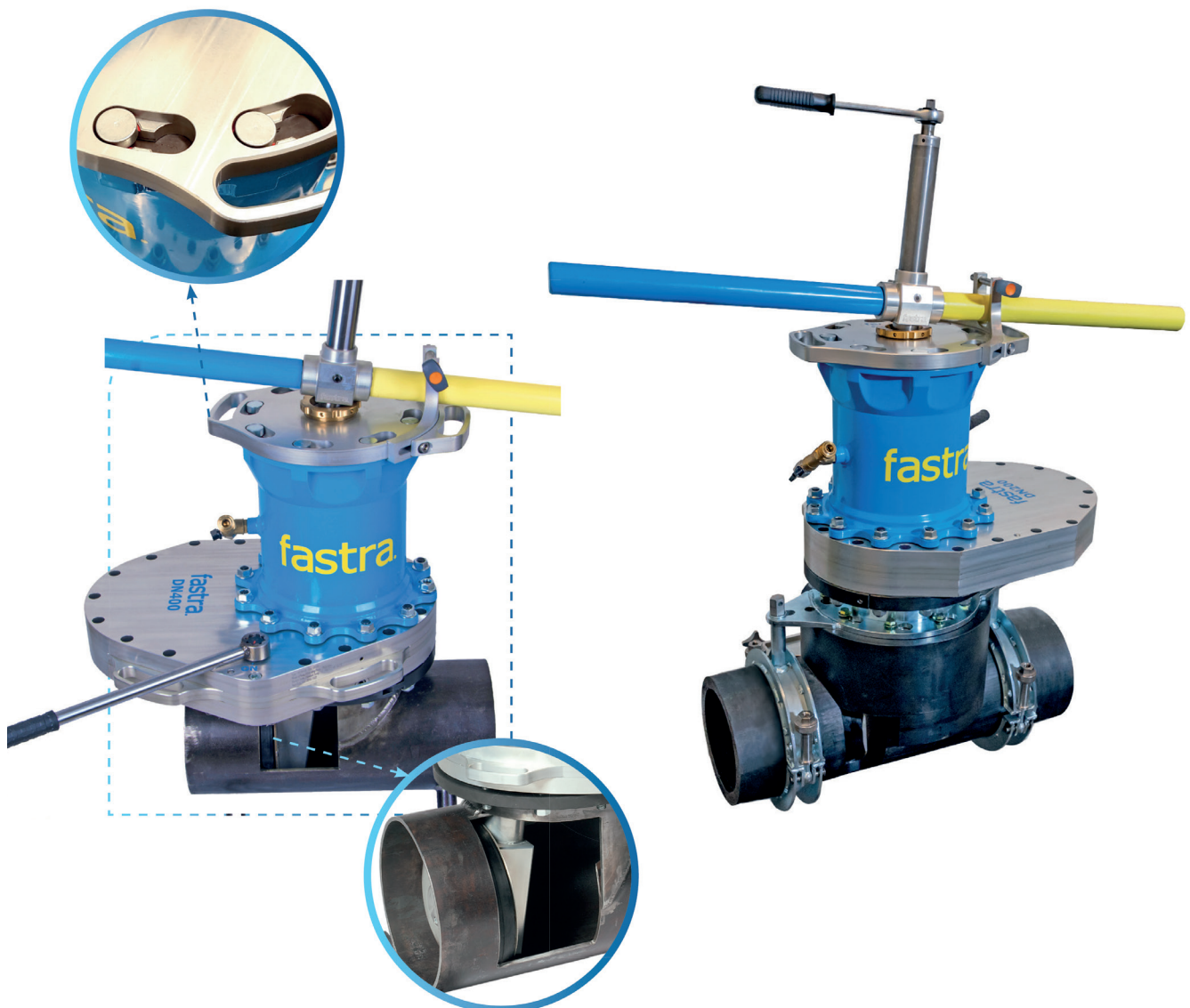
The **STOPL-S-F1** device is used to temporarily interrupt the flow of media in steel and polyethylene (PE) pipes with internal overpressure (or non-pressurised), without any medium leakage. The device relies on the principle of inserting a stoppling cylinder with sealing through a drilled aperture into the pipeline, moving it beyond the drilled aperture, compressing the sealing so that the entire pipeline is completely closed, and, thereby interrupting the medium flow.

The device is connected to the pipeline by means of a special fitting perpendicular to the pipeline axis.

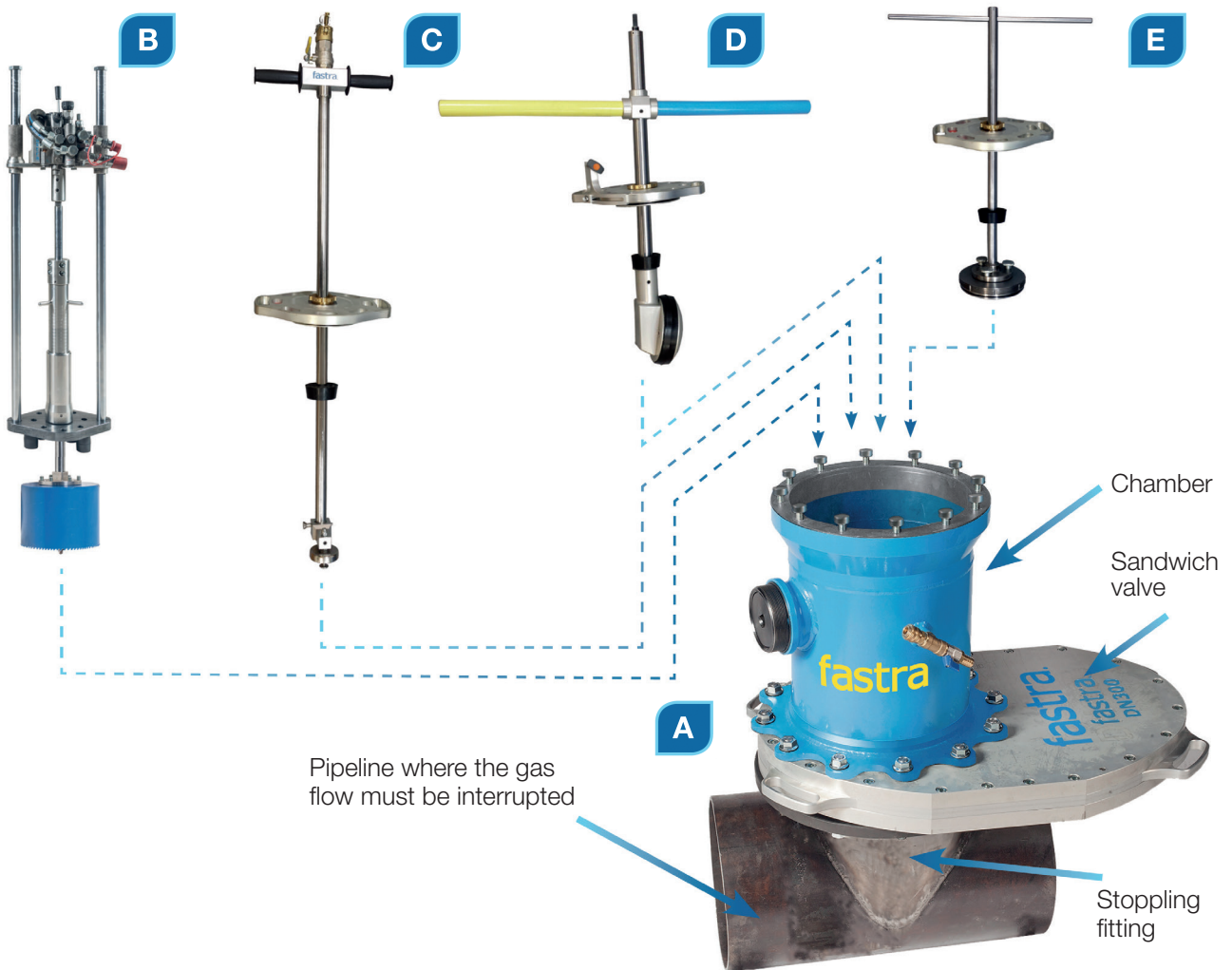
Technical specifications:

| | |
|---|---|
| Material and diameter of the sealed pipeline: | Steel pipes: DN 65 - DN 500 PE pipes: d90 - d400 |
| Media: | Natural gas, non-aggressive gases, water, other media after consulting the manufacturer |
| Overpressure in the pipeline to be plugged: | up to 8 bar |
| Operating temperature: | -10/+50°C |

The main advantages of the device are the **low weight** of its individual segments. Thus, only two workers are required for handling (transport, as well as assembly of the device to a special stoppling fitting, etc.) the DN300 equipment. Another advantage represents the high-end system of replaceable lids, which are equipped with a special **bayonet lock**, which enables easy mounting of components for particular working operations (lid with a drilling device, lid with a cleaning or stoppering device, lid with a stoppling rod...) to the chamber. Such an arrangement significantly reduces time between individual operations, as well as some working operations (e.g. pipeline cleaning). The chamber is fitted with an outlet for an eventual by-pass of the closed-off part of the pipeline.



STOPL-S-F1



A Chamber unit is used to fasten the entire system to the pipeline by means of a stoppling fitting and enables carrying out of individual technological operations without any medium leaking. Particular devices used for performing the respective technological operations can be easily and quickly changed by using a bayonet lock, which, at the same time, fulfils an important safety function.

B Lid with a drilling device is used to drill an aperture for inserting the stoppling device into the pipeline. The lid is fitted with a stabilising frame with a COMPACT-F1 drilling device, which is characterised by high reliability and robust construction.

C Lid with a cleaning device is used to remove shavings and chips produced in the course of drilling from the pipeline bottom, as well as dirt on the inner surface of the pipe from the place where the sealing of the stoppling rod cylinder will be mounted. The lid is equipped with a window, which allows to have a look through the drilled aperture into the pipeline and consecutively, it can be used for thorough cleaning. A cleaning rod, which is specially designed according to the pipeline material (steel or PE), passes through the lid so that cleaning is as efficient as possible.

D Lid with a stoppling device is used for temporary interruption of the medium flow in the pipeline. The stoppling rod passing through the lid is fitted in its working part with a stoppling cylinder with sealing; its operating part is adapted to control the cylinder. For dimensions up to DN400, the control part of the stoppling rod is fitted with arms used for inserting the cylinder into the pipeline. The arms are colour-coded to indicate particular part of the pipeline with the medium. The lid is fitted with a sliding locking fork to lock the working position of the arms and to precisely orient the stoppling cylinder in relation to the pipeline axis.

E Lid with a plugging device is used for sealing the drilled aperture after the medium flow in the pipeline is temporarily interrupted. A plug is mounted on the plugging rod passing through the lid. The plug is inserted into the stoppling fitting, and, thus the drilled aperture is closed. Finally, the stoppling fitting is provided with a lid that secures the secondary sealing of the fitting (or the drilled aperture).

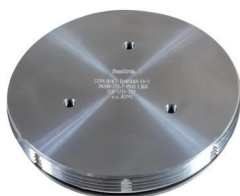
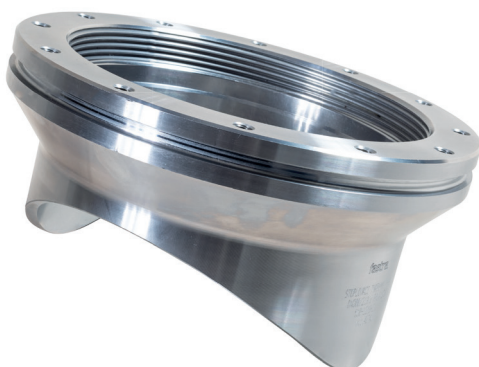


FITTINGS USED FOR STOPPLING THE PIPELINE

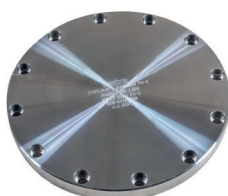
Steel pipes

As a standard, fittings FH-S are manufactured in the following dimensions in the pressure classes PN16 and PN40.

| DN /outer Ø |
|-------------|
| 65/76,1 |
| 80/88,9 |
| 100/108,0 |
| 100/114,3 |
| 125/133,0 |
| 125/139,7 |
| 150/159,0 |
| 150/168,3 |
| 200/219,1 |
| 250/273,0 |
| 300/323,9 |
| 350/355,6 |
| 350/377 |
| 400/406,0 |
| 400/426,0 |
| 500/508 |
| 500/530 |



Plug

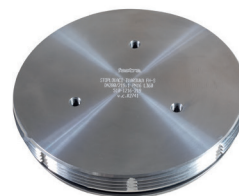
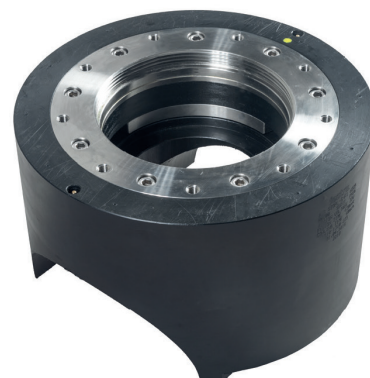


Cover lid

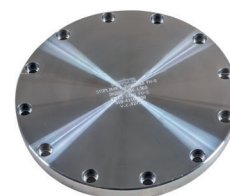
PE pipes

As a standard, PE fittings EFS are manufactured as electrical adapting pieces in the SDR11 dimensional range (PN10 gas, PN16 water).

| d |
|-----|
| 90 |
| 110 |
| 160 |
| 180 |
| 200 |
| 225 |
| 250 |
| 280 |
| 315 |
| 400 |



Plug



Stainless steel lid

CONTACT

FASTRA, s.r.o
Libenice 30 – Skalka, 280 02 Kolín

mobile: +420 603 528 387
e-mail: info@fastra.cz
web: www.fastra.cz



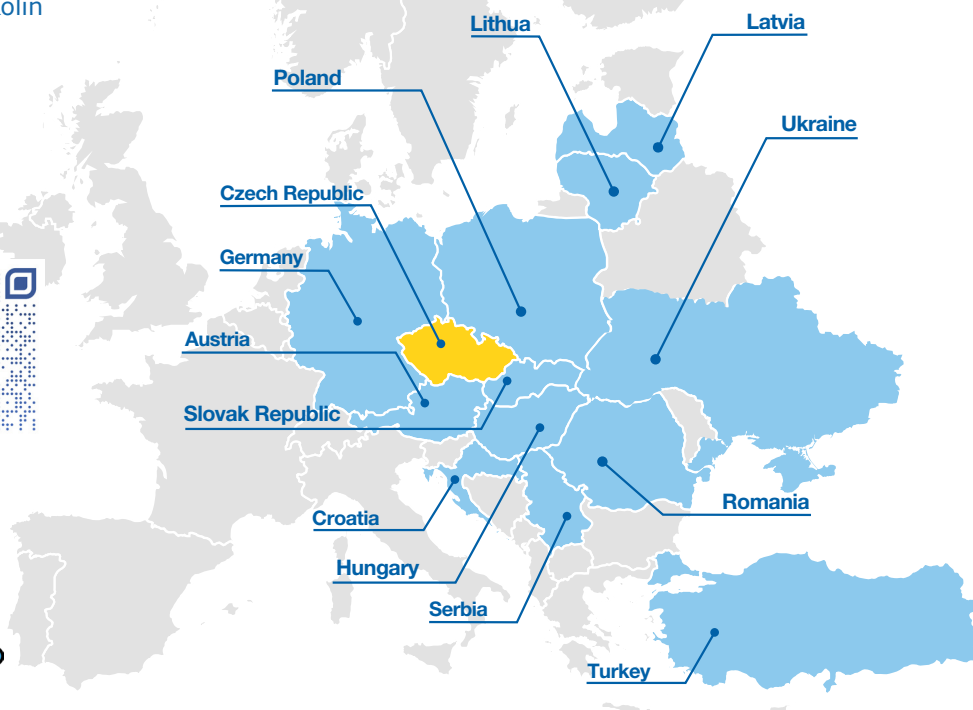
ISO 9001:2015
LL-C (Certification)



OUR PARTNERS



FOREIGN DISTRIBUTORS:



The stated values are for informational purposes only; specifications may be subject to change. Images and photographs are for illustrative purposes only. V4/2026

